

Products

Foreword

Felzer is one of the Scandinavian & BS leading providers of heating, ventilation, air conditioning and refrigeration solutions for industrial, commercial and residential applications. On our factories we create reliable and efficient climate equipment that improves human comfort, supports industrial processes and protects the environment.

Our wide range of liquid chillers includes innovative options. They allow to decrease installation costs and time as well as the lifecycle costs. Easy control and service, as well as comfort operation are in the focus. Our heat pump range includes the most advanced products for residential application and customized solutions for industrial solutions. IT product line is simple and reliable. In our new products we focus on inverter compressor and inverter pumps solutions, advanced freecooling solutions and critical climate application.

From current catalogue you can find the product line that suits your particular application. More in-depth technical data are available through our technical literature on the particular product lines. For individual consultancy and quotation please contact you local Felzer sales office.



Aircooled Units

AirPLUS

Aircooled scroll chiller



Cooling capacity A35/W7*: 160-1900 kW

Compressors: Scroll

Refrigerant: R410a

Fans: Axial

Condenser: Microchannel

Evaporator: BPHE

Basic version: EEV, RS485 Modbus, etc.

Key available options:

Inverter or On-Off pump and tank kits \\ EC Fans \\ Axitop-type diffusers \\ Coils e-coating \\ Touchscreen display \\ LON, BACnet \\ Heat recovery \\ Soft start \\ etc.

Freecooling options: fans control

Dependent - freecooling coils in parallel to condenser coils and use the same fans. Freecooling capacity depends on condensing pressure regulation.

Independent - freecooling coils in separate module and use separate group of fans. Freecooling capacity is independent from condensing pressure regulation.

Mixed - freecooling coils are partly dependent and partly independent.

Freecooling options: liquid control

Direct (Glycol) - glycol mixture from the system directed to the freecooling coils by 3 way valve.

Glycol Free - water in evaporator and glycol in the freecooling coils. Heat exchange is in BHPE heat exchanger. Freecooling coils are fed by additional pump.

Direct Pump - additional pump for freecooling coils instead of 3 way valve. Allows to reduce pressure drop and electrical consumption in non freecooling mode.

Temperature \\ Liquid \\ Controls options

Up to -35°C without freecooling - condenser bypass option with EC fans and wind baffles \\ Or TRIAC fan speed control \\ Or EC fans.

Upto -8°C leaving liquid - special BRINE option. Icebank compatible.

Hydromodule control - Felzer hydromodules can be controlled from the unit.

Noise \\ Efficiency options

Standard - most efficient solution from Price/Noise/EER ratio point of view.

X low noise - plus 1 coil/fan in each circuit and reduced fan speed.

High Efficiency - plus 1 coil/fan in each circuit and maximal fan speed.

* - A35/W7 = Ambient air temperature 35°C, User side leaving water temperature 7°C

Aircooled Chillers \ Scroll

AirONE

Aircooled scroll chiller



Cooling capacity A35/W7: 50-170 kW

Compressors: Scroll

Refrigerant: R410a

Fans: Axial

Condenser: Microchannel

Evaporator: BPHE

Key available options:

Freecooling \ Inverter or On-Off pump and tank kits \ EC Fans \ Axitop-type diffusers \ Coils e-coating \ Touchscreen display \ EEV \ Low noise \ Heat recovery \ Up to -35°C without freecooling etc.

AirS

Aircooled scroll chiller



Cooling capacity A35/W7: 27-42 kW

Compressors: Scroll

Refrigerant: R410a

Fans: Axial

Condenser: CuAl

Evaporator: BPHE

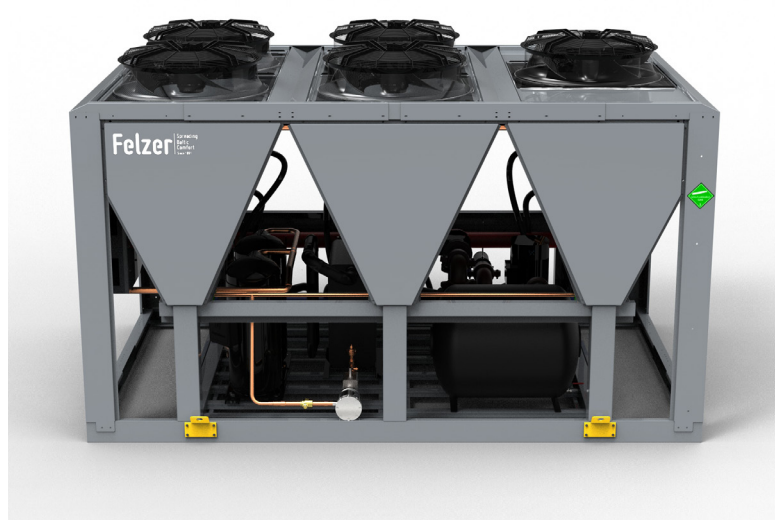
Key available options:

Pump kits \ EC Fans \ EEV \ etc.

Aircooled Chillers \ Inverter Scroll

AirPLUS iNVi

Aircooled inverter scroll chiller



Cooling capacity A35/W7: 160-560 kW

Compressors: Scroll Inverter

Refrigerant: R410a

Fans: Axial

Condenser: Microchannel

Evaporator: BPHE

Basic version: EEV, RS485 Modbus, etc.

Key available options:

Inverter or On-Off pump and tank kits \ EC Fans \ Axitop-type diffusers \ Coils e-coating \ Touchscreen display \ LON, BACnet \ Heat recovery \ etc.

Freecooling options: fans control

Dependent - freecooling coils in parallel to condenser coils and use the same fans. Freecooling capacity depends on condensing pressure regulation.

Independent - freecooling coils in separate module and use separate group of fans. Freecooling capacity is independent from condensing pressure regulation.

Mixed - freecooling coils are partly dependent and partly independent.

Freecooling options: liquid control

Direct (Glycol) - glycol mixture from the system directed to the freecooling coils by 3 way valve.

Glycol Free - water in evaporator and glycol in the freecooling coils. Heat exchange is in BPHE heat exchanger. Freecooling coils are fed by additional pump.

Direct Pump - additional pump for freecooling coils instead of 3way valve. Allows to reduce pressure drop and electrical consumption in non freecooling mode.

Temperature \ Liquid \ Controls options

Up to -35°C without freecooling - condenser bypass option with EC fans and wind baffles \ Or TRIAC fan speed control \ Or EC fans.

Upto -8°C leaving liquid - special BRINE option. Icebank compatible.

Hydromodule control - Felzer hydromodules can be controlled from the unit.

Noise \ Efficiency options

Standard - most efficient solution from Price/Noise/EER ratio point of view.

X low noise - plus 1 coil/fan in each circuit and reduced fan speed.

High Efficiency - plus 1 coil/fan in each circuit and maximal fan speed.

Aircooled Chillers \ Inverter Scroll

AirONE iNVi

Aircooled inverter scroll chiller



Cooling capacity A35/W7: 50-170 kW

Compressors: Scroll Inverter

Refrigerant: R410a

Fans: Axial

Condenser: Microchannel

Evaporator: BPHE

Key available options:

Freecooling \ Inverter or On-Off pump and tank kits \ EC Fans \ Axitop-type diffusers \ Coils e-coating \ Touchscreen display \ EEV \ Low noise \ Heat recovery \ etc.

AirS iNVi

Aircooled inverter scroll chiller



Cooling capacity A35/W7: 27-42 kW

Compressors: Scroll Inverter

Refrigerant: R410a

Fans: Axial

Condenser: CuAl

Evaporator: BPHE

Key available options:

Pump kits \ EC Fans \ EEV \ etc.

Aircooled Chillers \ Screw Flooded

ScrewDRIVER

Aircooled screw flooded evaporator chiller



Cooling capacity A35/W7: 170-1800 kW

Compressors: Screw
Refrigerant: R134a (R1234ze on request)
Fans: Axial
Condenser: Microchannel
Evaporator: Shell&Tube Flooded

Basic version: EEV, RS485 Modbus, etc.

Key available options:
Inverter or On-Off pump and tank kits \ EC
Fans \ Axitop-type diffusers \ Coils e-coating
\ Touchscreen display \ LON, BACnet \ Heat
recovery \ Soft start \ etc.

Freecooling options: fans control

Dependent - freecooling coils in parallel to condenser coils and use the same fans. Freecooling capacity depends on condensing pressure regulation.

Independent - freecooling coils in separate module and use separate group of fans. Freecooling capacity is independent from condensing pressure regulation.

Mixed - freecooling coils are partly dependent and partly independent.

Freecooling options: liquid control

Direct (Glycol) - glycol mixture from the system directed to the freecooling coils by 3 way valve.

Glycol Free - water in evaporator and glycol in the freecooling coils. Heat exchange is in BHPE heat exchanger. Freecooling coils are fed by additional pump.

Direct Pump - additional pump for freecooling coils instead of 3way valve. Allows to reduce pressure drop and electrical consumption in non freecooling mode.

Temperature \ Liquid \ Controls options

Up to -35°C without freecooling - condenser bypass option with EC fans and wind baffles \ Or TRIAC fan speed control \ Or EC fans.

Upto -8°C leaving liquid - special BRINE option. Icebank compatible.

Hydromodule control - Felzer hydromodules can be controlled from the unit.

Noise \ Efficiency options

Standard - most efficient solution from Price/Noise/EER ratio point of view.

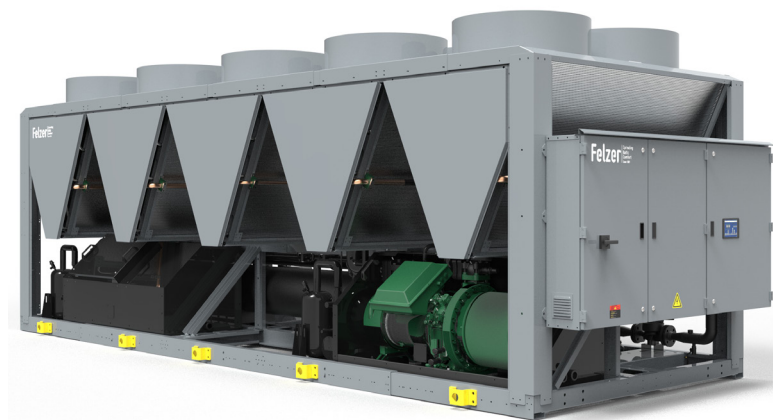
X low noise - plus 1 coil/fan in each circuit and reduced fan speed.

High Efficiency - plus 1 coil/fan in each circuit and maximal fan speed.

Aircooled Chillers \ Inverter Screw \ DX Screw

ScrewDRIVER iNVi

Aircooled inverter screw flooded evaporator chiller



Cooling capacity A35/W7: 170-1800 kW

Compressors: Screw Inverter

Refrigerant: R134a (R1234ze on request)

Fans: Axial

Condenser: Microchannel

Evaporator: Shell & Tube Flooded

Basic version: EEV, RS485 Modbus, etc.

Key available options:

Freecooling (all versions) \ High efficiency and low nose \ Inverter or On-Off pump and tank kits \ EC Fans \ Axitop-type diffusers \ Coils e-coating \ Touchscreen display \ Heat recovery \ etc.

BalticSCREW AIR

Aircooled screw DX evaporator chiller



Cooling capacity A35/W7: 170-1800 kW

Compressors: Screw

Refrigerant: R134a (R449A/XP40, R404a, R1234ze, etc. on request)

Fans: Axial

Condenser: Microchannel

Evaporator: DX Shell & Tube

Already included: EEV, RS485 Modbus

Key available options:

Freecooling (all versions) \ Upto -35°C without freecooling \ High efficiency and low nose \ Inverter or On-Off pump and tank kits \ EC Fans \ Axitop-type diffusers \ Coils e-coating \ Touchscreen display \ Heat recovery \ Soft start \ etc.

Aircooled Chillers \ Others

AirDUCT

Ducted chiller



Cooling capacity A35/W7: 40-320 kW

Compressors: Scroll

Refrigerant: R410a

Fans: Centrifugal EC

Condenser: CuAl

Evaporator: BPHE

Basic version: RS485 Modbus, etc.

Key available options:

Freecooling \ Inverter or On-Off pump and tank kits \ Coils coating \ Touchscreen display \ EEV \ Low noise \ Heat recovery \ etc.

CUSTOM Chillers

to customer requested specification



Cooling capacity A35/CW7: 5-3000 kW

Cabinet and piping: Standard, Stainless steel, etc.

Compressors: Screw, Scroll, Reciprocating (inverter available)

Refrigerants: HFC (R410A, R134a, R404a, R407C, etc.), HFO (R1234ze, R449A/XP40, etc.), Propane (R290)

Fans: Axial, Centrifugal

Condenser: Microchannel, CuAl, Coated, Adiabatic cooling, etc.

Evaporator: BPHE, Shell&Tube, Remote

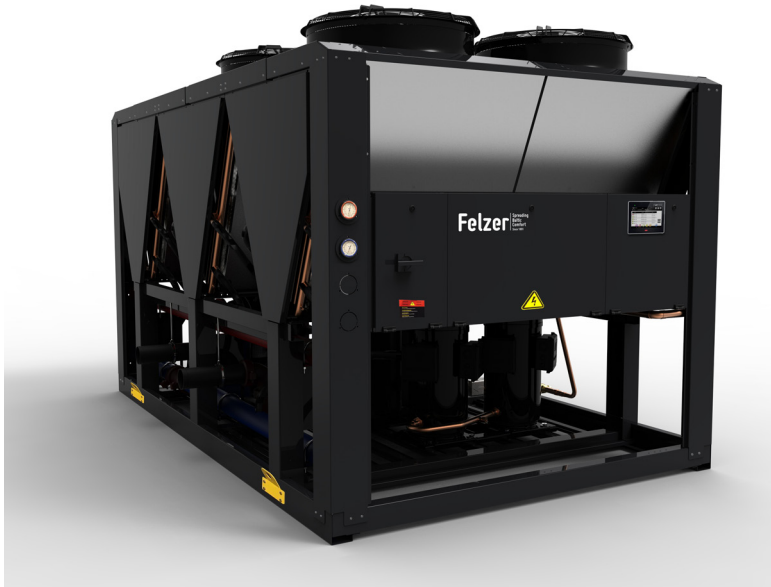
Key applications:

Aggressive areas \ Industrial \ Refrigeration \ High and low ambient \ Special requirements \ etc.

Aircooled Split Chillers \ Condensing Units

AirPLUS SPLIT

Split (remote evaporator) liquid chiller \ Condensing unit



Cooling capacity A35/W7: 50-1900 kW

Outdoor unit

Compressors: Scroll

Refrigerant: R410a

Fans: Axial

Condenser: Microchannel

Basic version: RS485 Modbus, etc.

Key available options:

High efficiency and low noise \ EC Fans \ Axitop-type diffusers \ Coils e-coating \ Touchscreen display \ Heat recovery \ Soft start \ etc.

Indoor unit

Evaporator: BPHE

Key available options:

Inverter or On-Off pump and tank kits \ Variable water flow \ EEV \ Low noise \ etc.

COOLAHU \ COOLAHU iNVi

AHU condensing unit



Cooling capacity A35/E5: 10-200 kW

COOLAHU

Compressors: Scroll \ Scroll Inverter

Refrigerant: R410a (R407c, R134a on request)

Fans: Axial

Control: From AHU

COOLAHU iNVi

Compressors: Inverter Scroll

Refrigerant: R410a (R407c, R134a on request)

Fans: Axial

Control: Integrated controller

Watercooled \ Remote Condenser Chillers

WaterBIRD \ WaterBIRD iNVi

Chiller water stations: watercooled and remote condenser



Cooling capacity CW35/W7*: 30-750 kW

Compressors: Scroll \ Scroll inverter optionally

Refrigerant: R410a

Condenser: BPHE \ Remote

Evaporator: BPHE

Basic version: EEV, RS485 Modbus, Low noise panels, hydronic station, etc.

Key available options:

Touchscreen display \ LON, BACnet \ Soft start
\ Heat recovery \ Energymeter \ COP control \
Stainless steel water piping \ etc.

Freecooling options

Parallel inverter - freecooling operates simultaneously to compressors. Condensing pressure is controlled by inverter pump. Drycooler fans are controlled from the unit.

Parallel valve - freecooling operates simultaneously to compressors. Condensing pressure is controlled by 3 way valve. Drycooler fans are controlled from the unit.

Serial - freecooling operates then compressors are stopped. Drycooler fans are controlled from the unit.

Tank & Pumps options

Direct - tank on the water inlet or outlet. High or low pressure On/Off or inverter system pump. Inverter system pump can be differential pressure regulated from 70 to 100%.

VWF (variable water flow) - hydronic separator tank and evaporator very low pressure pump. High or low pressure On/Off or inverter system pump. Inverter system pump can be differential pressure regulated from 0 to 100%.

Customisation - chilled beam 3 way valve \ second system pump \ etc.

Ambient temperature options

Drycooler fans control from the unit.

Up to -35°C on watercooled chiller - 3 way bypass valve and condenser pump.

Up to -35°C on remote condenser chiller - condenser bypass and liquid receiver.

* - CW35/W7 = Condenser leaving water temperature 35°C, User side leaving water temperature 7°C

Watercooled \ Remote Condenser Chillers

WaterPLUS

Watercooled or remote condenser scroll chillers



Cooling capacity CW35/W7: 160-1200 kW

Compressors: Scroll

Refrigerant: R410a

Condenser: BPHE or remote

Evaporator: BPHE

Basic version: EEV, RS485 Modbus, etc.

Key available options:

Low noise \ Touchscreen display \ LON, BACnet
\ Soft start \ Heat recovery \ Energymeter \
COP control \ Stainless steel water piping \ etc.

ScrewNORD \ ScrewNORD iNVi

Watercooled screw flooded evaporator chillers



Cooling capacity CW35/W7: 190-1700 kW

Compressors: Screw \ Screw inverter optionally

Refrigerant: R134a, (R1234ze on request)

Condenser: Shell & Tube

Evaporator: Shell & Tube Flooded

Basic version: EEV, RS485 Modbus, etc.

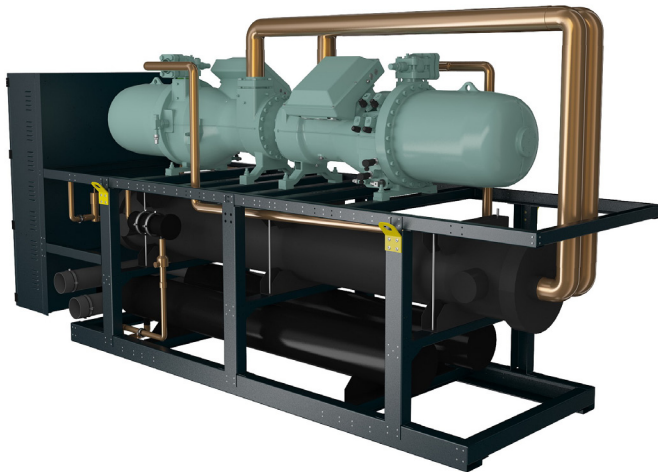
Key available options:

Low noise \ Touchscreen display \ LON, BACnet
\ Soft start \ Heat recovery \ Energymeter \
COP control \ etc.

Watercooled \ Remote Condenser Chillers

BalticSCREW WATER

Watercooled or remote condenser screw chillers



Cooling capacity CW35/W7: 200-2500 kW

Compressors: Screw

Refrigerant: R134a, (R1234ze on request)

Condenser: Shell & Tube or remote

Evaporator: DX Shell & Tube

Basic version: EEV, RS485 Modbus, etc.

Key available options:

Low noise \ Touchscreen display \ LON, BACnet
\ Soft start \ Heat recovery \ Energymeter \
COP control \ etc.

iNVi - inverter screw available

CUSTOM Chillers

to customer requested specification



Cooling capacity CW35/W7: 5-3000 kW

Cabinet and piping: Standard, Stainless steel, etc.

Compressors: Screw, Scroll, Reciprocating
(inverter available)

Refrigerants: HFC (R410A, R134a, R404a, R407C,
etc.), HFO (R1234ze, R449A/XP40, etc.), Propane
(R290)

Condenser: BPHE, Shell&Tube, Remote

Evaporator: BPHE, Shell&Tube, Remote

Key applications:

Aggressive areas \ Industrial \ Refrigeration \
High and low ambient \ Special requirements \
etc.

Drycoolers \ Remote Condensers

nordGALE RC

Microchannel remote condensers



Heat rejection capacity A35/C50*: 50-940 kW

Key available options:

Low noise \ EC fans \ Axitop - type diffusers \
Flooded condenser low temperature control \
Adiabatic cooling \ etc.

nordGALE DC

Drycoolers



Heat rejection capacity A35/CW45: 40-1000 kW

Key available options:

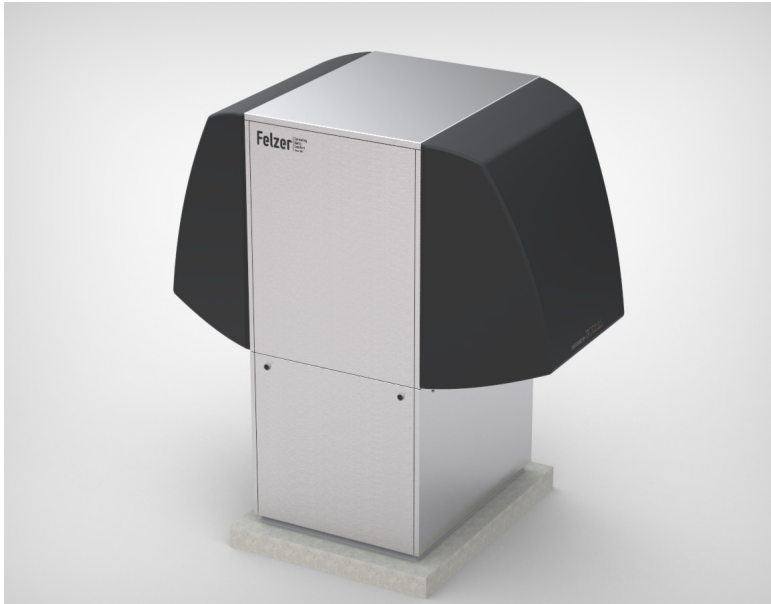
Low noise \ EC fans \ Axitop - type diffusers \
Adiabatic cooling \ etc.

* - A35/C50 = Ambient air temperature 35°C, Condensing temperature 50°C

Heat Pumps: Air To Water

NordicLIGHT iNVi

Air to water low temperature inverter heatpump



Heating capacity A7/W35*: 17 kW

Compressors: Inverter Scroll

Refrigerant: R410a

Fans: Axial

Condenser: BPHE

Evaporator: CuAl

Up to -20°C in heat pump mode

Up to -40°C in electrical heating mode

AirONE HP

Air to water heatpump



Heating capacity A7/W35: 25-170 kW

Hot water temperature standard: upto +55°C

Hot water temperature HT: upto +65°C

Compressors: Scroll

Refrigerant: R410a

Fans: Axial

Condenser: BPHE

Evaporator: CuAl

Basic version: RS485 Modbus, etc.

Key available options:

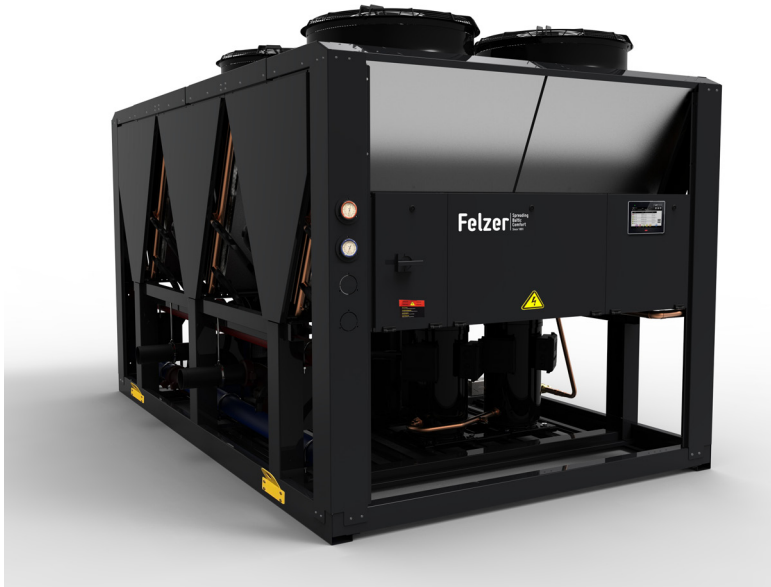
Inverter or On-Off pump and tank kits \\ EC Fans
\\ Axitop-type diffusers \\ Touchscreen display \\
EEV \\ Low noise \\ Heat recovery \\ etc.

* - A7/W35 = Ambient air temperature 7°C, User side leaving water temperature 35°C

Heatpumps: Air to Water

AirPLUS HP

Air to water heatpump



Heating capacity A7/W35: 170-1800 kW

Hot water temperature standard: upto +55°C

Hot water temperature HT: upto +65°C

Compressors: Scroll

Refrigerant: R410a

Fans: Axial

Condenser: BPHE

Evaporator: CuAl

Basic version: EEV, RS485 Modbus, etc.

Key available options:

Inverter or On-Off pump and tank kits \\ EC Fans
\\ Axitop-type diffusers \\ Touchscreen display \\
Low noise \\ Heat recovery \\ Soft start \\ etc.

BalticSCREW HP

Air to water heatpump



Heating capacity A7/W35: 170-1800 kW

Hot water temperature standard: upto +55°C

Hot water temperature HT: upto +65°C

Compressors: Screw

Refrigerant: R134a (R449A/XP40, R404a, R1234ze,
etc. on request)

Fans: Axial

Condenser: BPHE

Evaporator: CuAl

Basic version: EEV, RS485 Modbus, etc.

Key available options:

Inverter or On-Off pump and tank kits \\ EC Fans
\\ Axitop-type diffusers \\ Touchscreen display \\
EEV \\ Low noise \\ Heat recovery \\ etc.

Heat Pumps: Liquid to Water

WaterPLUS HP \\ WaterBIRD HP

Liquid to water heat pumps \\ Hot water stations



Heating capacity S7/W35*: 30-1200 kW

Hot water temperature standard: upto +55°C

Hot water temperature HT: upto +65°C

Compressors: Scroll

Refrigerant: R410a

Condenser: BPHE

Evaporator: BPHE

Basic version: EEV, RS485 Modbus, etc.

Key available options:

Low noise \\ Touchscreen display \\ LON, BACnet
\\ Soft start \\ Heat recovery \\ Energymeter \\
COP control \\ Stainless steel water piping \\ etc.

Heatpump versions

HPG: Ground source - nonreversible unit. Source liquid from -5°C. Heat water upto +55 - +65°C

HPR: Reversible on refrigerant side - the unit can work as a heat pump or as a chiller. The reversion in the refrigerant circuit. Liquid from the source side is separated from the user side water.

HPRW: Reversible on water side - the unit can work as a heat pump or as a chiller. The reversion in the water circuit. Liquid from the source side is mixed with the user side.

Tank & Pumps options

Tank - tank on the cold or hot water side.

Inverter or ON/OFF pumps - high or low pressure On/Off or inverter system pump.

Hydronic separator tank - hydronic separator tank on the cold or hot water side and heat exchanger very low pressure pump. High or low pressure On/Off or inverter system/user pump. Inverter system pump can be differential pressure regulated from 0 to 100%.

Customisation - 3 way valves \\ Second pumps \\ etc.

* - S7/W35 = Source side leaving water temperature 7°C, User side leaving water temperature 35°C

Heat pumps: Liquid to Water

WaterPLUS HPR

Heat recovery heat pump (source 20-40°C to water upto 78°C)



Heating capacity S40/W78*: 70-280 kW

Hot water temperature: upto +78°C

Compressors: Scroll

Refrigerant: R134a

Condenser: BPHE

Evaporator: BPHE

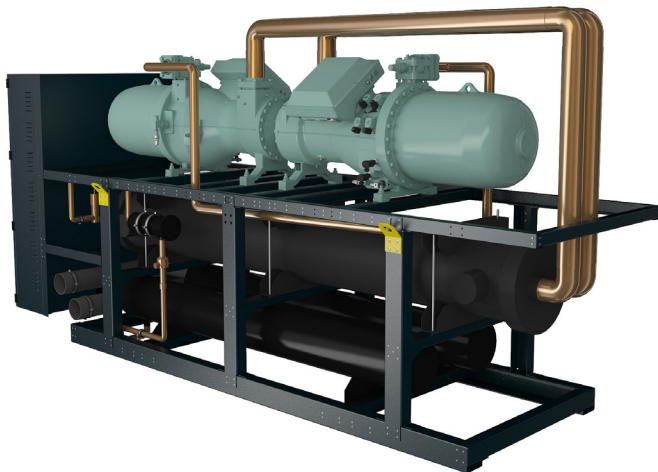
Already included: EEV, RS485 Modbus

Key available options:

Low noise \\ Touchscreen display \\ LON, BACnet
\\ Soft start \\ Heat recovery \\ Energymeter \\
COP control \\ Stainless steel water piping \\ etc.

BalticSCREW WATER HP

Watercooled screw heatpump



Heating capacity S7/W35: 190-2700 kW

Hot water temperature standard: upto +55°C

Hot water temperature HT: upto +65°C

Hot water temperature SHT: upto +78°C

Compressors: Screw (inverter on request)

Refrigerant: R134a, (R1234ze on request)

Condenser: DX Shell & Tube

Evaporator: Shell & Tube

Already included: EEV, RS485 Modbus

Key available options:

Low noise \\ Touchscreen display \\ LON, BACnet
\\ Soft start \\ Heat recovery \\ Energymeter \\
COP control \\ etc.

* - S40/W78 = Source side leaving water temperature 40°C, User side leaving water temperature 78°C

Efficiency Products

Icebank Units



Direct expansion stainless steel piping units:

- \\ Aircooled or Watercooled or Remote condenser integrated refrigeration circuit
- \\ Stainless steel tanks
- \\ Stainless steel pipes evaporator

Direct expansion copper piping units

- \\ Aircooled or Watercooled or Remote condenser integrated refrigeration circuit
- \\ Stainless steel tanks
- \\ Copper pipes evaporator

Chilled water tanks with ice accumulation

- \\ Stainless steel tanks
- \\ PVC or stainless steel pipes liquid cooler
- \\ Compatible with Felzer glycol chillers

Smart Hydronic Modules



What can be integrated?

Controls: Controller or controll from the chiller

Pumps: On/Off, Inverter: evaporator \\ system \\ condenser \\ chilled beams \\ etc.

Tanks: Direct \\ Hydraulic separator \\ etc.

Heat exchangers: BPHE: freecooling \\ glycol/ water \\ remote evaporator \\ etc.

3 way valves: condensing pressure control \\ freecooling \\ supply water temperature control \\ etc.

Cabinet: Frame \\ Panels \\ Low noise \\ Stainless steel \\ Stainless steel piping

Electric box: Power supply \\ control terminals \\ etc.

Direct Expansion Units

Air Handling Units With Integrated DX Refrigeration Circuit

Rooftops, Air dehumidifiers, Refrigeration AHU, IT adiabatic cooling



Rooftop DX air conditioners: 7-150 kW

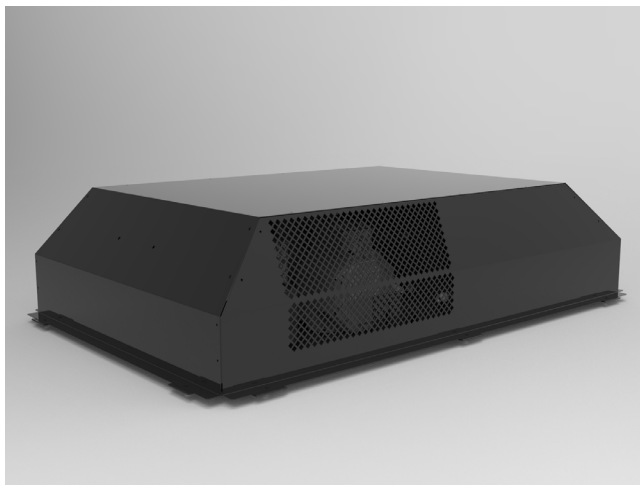
Swimming pool dehumidifiers: upto 27000 m³/h

Heat pump modular air handling units (AHU): < 70000 m³/h

Direct cooling modular air handling units (AHU): < 70000 m³/h

IT adiabatic cooling AHU: 70-600 kW

Railway Air Conditioning



Driver cabin rooftop air conditioners: upto 7kW

Coach rooftop air conditioners: upto 30kW

Coach split air conditioners: upto 20kW

Compressors: Scroll, Reciprocating

Ambient: Standard \ High temperature

IT Products

Bytecool DX \ DX iNVi

Direct expansion units



Cooling capacity A35/RA24*: 5-105 kW

DXR: Remote condenser

DXW: Water cooled

DXWFC: Water cooled with indirect freecooling

CWDXR: Chilled water with DXR reservation

CWDXR: Chilled water with DXW reservation

Air direction: Upflow or Downflow

Compressors: Scroll (Scroll inverter in iNVi)

Refrigerant: R410a (R407c, R134a on request)

Fans: Centrifugal EC

Condenser: BPHE or Remote

Evaporator: CuAl

Key available options:

Direct freecooling \ Humidifier \ Water or electrical heaters \ etc.

Bytecool CW

Chilled water units



Cooling capacity W7/RA24:** 8-230 kW

CW: Chilled water

CWCW: Chilled water with CW reservation

Air direction: Upflow or Downflow

Fans: Centrifugal EC

Cooler: CuAl

Key available options:

Direct freecooling \ Humidifier \ Water or electrical heaters \ etc.

* - A35/RA24 = Ambient air temperature 35°C, Room air temperature 24°C and relative humidity 50%

** - W7/RA24 = Source side entering water temperature 7°C, Room air temperature 24°C and relative humidity 50%

Bytecool IR iNVi

Inrow units



Width 300mm: Remote condenser \\ Chilled water

Width 400mm: Remote condenser \\ Watercooled \\ Chilled water

Width 600mm: Remote condenser \\ Watercooled \\ Chilled water

Compressors: Scroll inverter

Refrigerant: R410a

Fans: Centrifugal EC

Key available options:

Indirect freecooling on watercooled \\ etc.

Bytecool RC

Remote condensers for Bytecool DXR



Heat rejection capacity A35/C50: 7-140 kW

Air direction: Vertical or Horizontal

Refrigerant: R410a (R407c, R134a on request)

Fans: Axial

Condenser: CuAl (microchannel available)

Key available options:

Upto -35°C condensing pressure control \\ Fan speed regulation \\ EC fans \\ etc.

Heavy Industrial Equipment

Glycol Chillers

Aircooled and watercooled



MT: upto -15°C leaving liquid temperature

LT: upto -35°C leaving liquid temperature

Cooling capacity: upto 2500 kW

Compressors: Screw, Reciprocating, Scroll

Refrigerant: HFC (R404a, R407C, R410A, R134a, etc.), HFO (R449A/XP40, R1234ze, etc.), Propane (R290)

Condenser: Microchannel or CuAl

Evaporator: DX Shell & Tube or BPHE

Already included: EEV, RS485 Modbus

Key available options:

Inverter or On-Off pump and tank kits \\ EC Fans \\ Axitop-type diffusers \\ Coils e-coating \\ Touchscreen display \\ LON, BACnet \\ Heat recovery \\ etc.

Hot Water Chillers

Aircooled and watercooled



Upto +35°C evaporator water temperature

Higher temperatures entering/leaving the unit
(with water bypass and pumps system)

Cooling capacity: upto 2500 kW

Compressors: Screw, Reciprocating, Scroll

Refrigerant: HFC (R410A, R134a, R407C, etc.), HFO (R1234ze, R449A/XP40, etc.)

Condenser: Microchannel or CuAl

Evaporator: DX Shell & Tube or BPHE

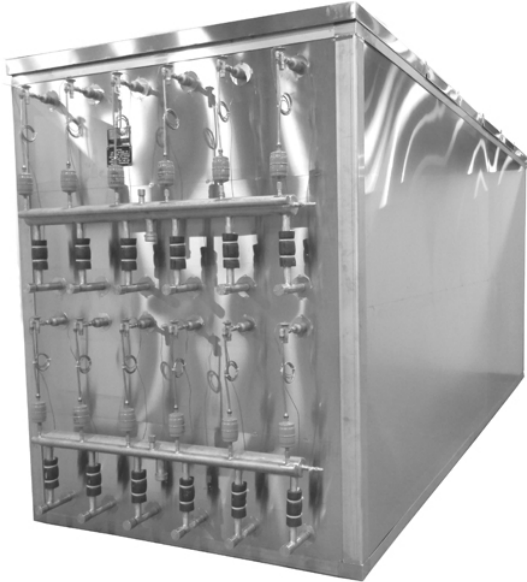
Key available options:

Inverter or On-Off pump and tank kits \\ EC Fans \\ Axitop-type diffusers \\ Coils e-coating \\ Touchscreen display \\ LON, BACnet \\ Heat recovery \\ etc.

Heavy Industrial Equipment

Stainless Steel Welded Structures

Heat exchangers, tanks, etc.



Steels: Stainless 304, 316, etc.

Applications: tanks, evaporators, frames, freeze dryers, piping sets, etc.

Compressor Racks

Custom made



Compressors: Reciprocating, Scroll, Screw

Refrigerants: HFC (R410A, R134a, R407C, etc.),
HFO (R1234ze, R449A/XP40, etc.), CO2 (R744),
Propane (R290)

Evaporation temperatures:

HT: +5°C

MT: -8°C

LT: -35°C

XLT: -50°C

This Page Intentionally Left Blank



Felzer SIA
Brīvības gatve, 201
Rīga, Latvia, LV-1039
tel: +371 6788 2102
mail@felzer.lv
www.felzer.lv

Felzer is continuously improving its products. We therefore reserve the right to change the design and specifications without prior notification.

Rights reserved. Felzer and the Felzer logo are registered trademarks of Felzer SIA. All trademarks to which reference is made herein are the property of their owners.

© Felzer SIA 2022. Printed in Latvia